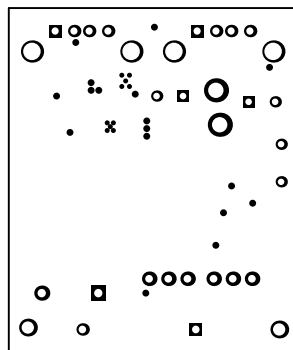
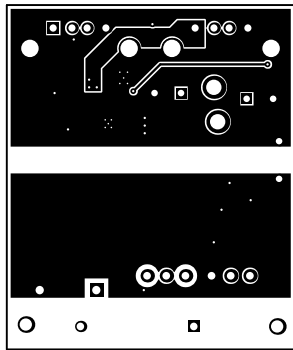


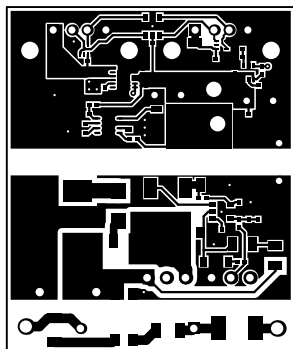
ALL ARTWORK VIEWED FROM TOP SIDE	BOARD #: PMP8817	REV: C	SUN REV: Not In VersionControl
LAYER NAME = Top Overlay			
PLOT NAME = Top Overlay	GENERATED : 10/7/2013 9:57:36 AM	TEXAS INSTRUMENTS	



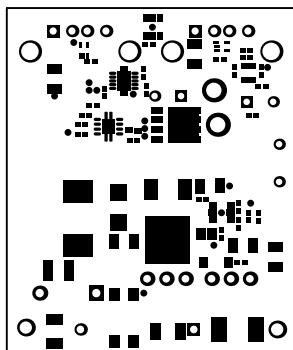
ALL ARTWORK VIEWED FROM TOP SIDE	BOARD #: PMP8817	REV: C	SUN REV: Not In VersionControl
LAYER NAME = Top Solder			
PLOT NAME = Top Solder Mask	GENERATED : 10/7/2013 9:57:36 AM	TEXAS INSTRUMENTS	



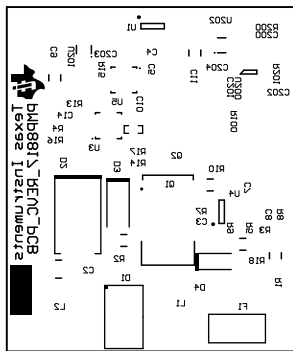
ALL ARTWORK VIEWED FROM TOP SIDE	BOARD #: PMP8817	REV: C	SUN REV: Not In VersionControl
LAYER NAME = Top Layer			
PLOT NAME = Top Layer	GENERATED : 10/7/2013 9:57:37 AM	TEXAS INSTRUMENTS	



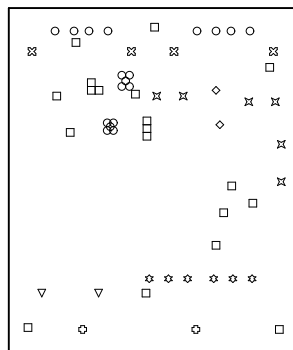
ALL ARTWORK VIEWED FROM TOP SIDE	BOARD #: PMP8817	REV: C	SUN REV: Not In VersionControl
LAYER NAME = Bottom Layer			
PLOT NAME = Bottom Layer	GENERATED : 10/7/2013 9:57:37 AM	TEXAS INSTRUMENTS	



ALL ARTWORK VIEWED FROM TOP SIDE	BOARD #: PMP8817	REV: C	SUN REV: Not In VersionControl
LAYER NAME = Bottom Solder			
PLOT NAME = Bottom Solder Mask	GENERATED : 10/7/2013 9:57:38 AM	TEXAS INSTRUMENTS	



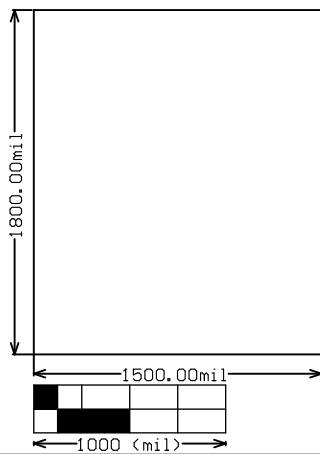
ALL ARTWORK VIEWED FROM TOP SIDE	BOARD #: PMP8817	REV: C	SUN REV: Not In VersionControl
LAYER NAME = Bottom Overlay			
PLOT NAME = Bottom Overlay	GENERATED : 10/7/2013 9:57:38 AM	TEXAS INSTRUMENTS	



Symbol	Hit Count	Tool Size	Plated	Hole Type
○	10	7.874mil (0.2mm)	PTH	Round
□	17	12mil (0.305mm)	PTH	Round
⊗	6	33.465mil (0.85mm)	PTH	Round
○	8	37.402mil (0.95mm)	PTH	Round
⊕	2	39.37mil (1mm)	PTH	Round
☆	6	40mil (1.016mm)	PTH	Round
▽	2	43.307mil (1.1mm)	PTH	Round
□	2	63mil (1.6mm)	PTH	Round
◇	2	80mil (2.032mm)	PTH	Round
⊗	4	90.551mil (2.3mm)	PTH	Round
59 Total				

Drill Table

ALL ARTWORK VIEWED FROM TOP SIDE	BOARD #: PMP8817	REV: C	SUN REV: Not In VersionControl
LAYER NAME = Drill Drawing			
PLOT NAME = Drill Drawing	GENERATED : 10/7/2013 9:57:39 AM	TEXAS INSTRUMENTS	



ALL ARTWORK VIEWED FROM TOP SIDE	BOARD #: PMP8817	REV: C	SUN REV: Not In VersionControl
LAYER NAME = M2 Board Dimensions			
PLOT NAME = Board Dimensions	GENERATED : 10/7/2013 9:57:39 AM	TEXAS INSTRUMENTS	